

## **PROCESS 3: SETUP ORDER PROVISIONING AND DELIVERY PLANNING FOR PRODUCTS**

### **SCENARIO 2: SETUP ITEM SPECIFIC PROVISIONING, SOURCING AND PRODUCTION MECHANISM FOR ITEMS**

#### **Introduction**

Relgo marketplace is the platform provided to present products in their own store or third party store and facilitate a transaction, whereas products delivered and fulfilled by wholesalers.

#### **Prerequisites**

- Create account in RNC (<http://relgo.com/>)
- Verify and create identity cast.
- Subscribe in RAS (<http://www.relgo.com/ras/>) with generated identity cast.
- Install bootstrap and market place related processes.

#### **Overview**

##### **Overview of the process**

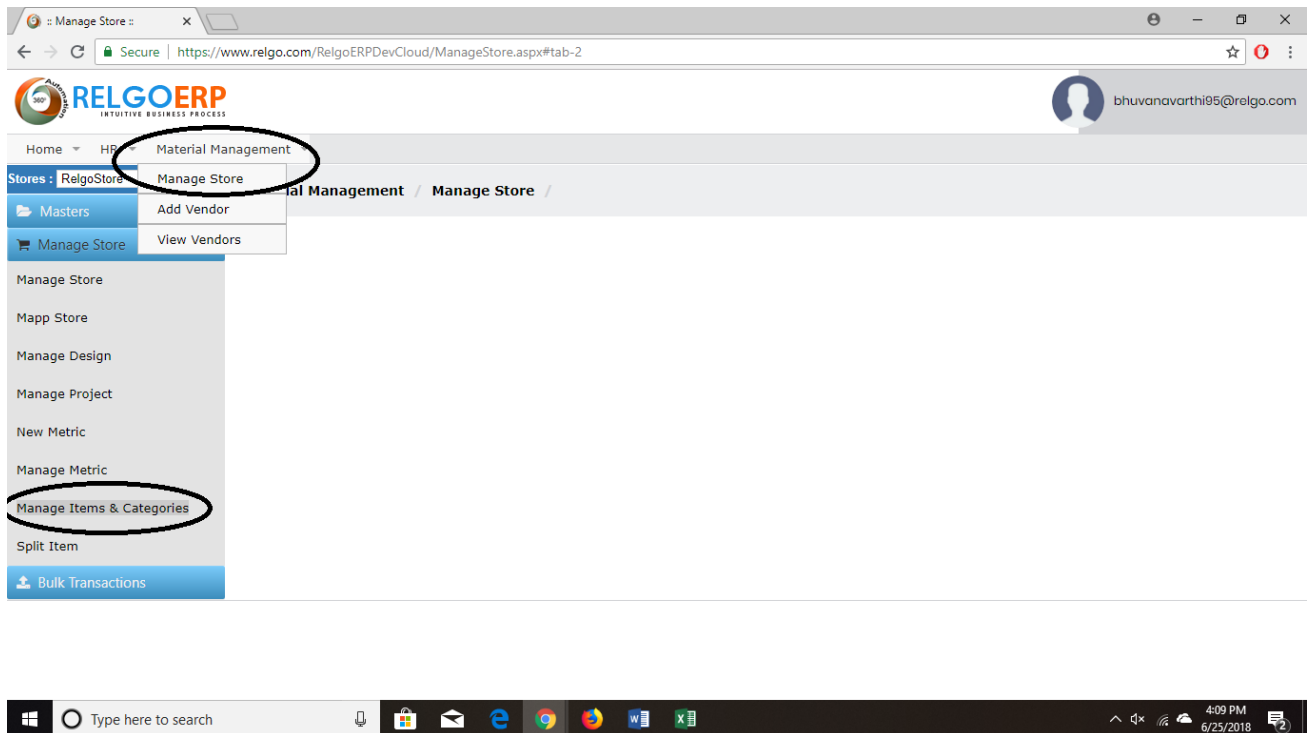
- Setup Order for provisioning.
- Delivery planning for Products.

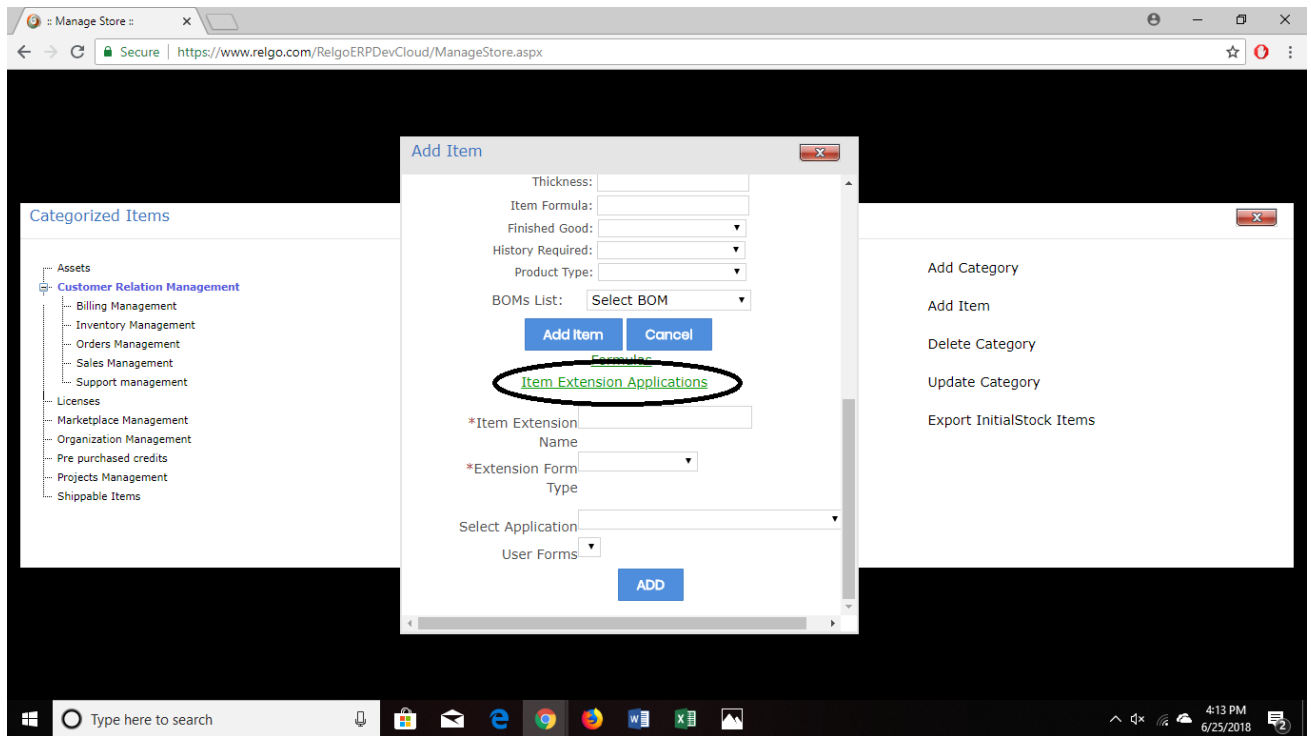
## SETUP EXTENSION FORM

Login with Employee account in ERP, Material Management

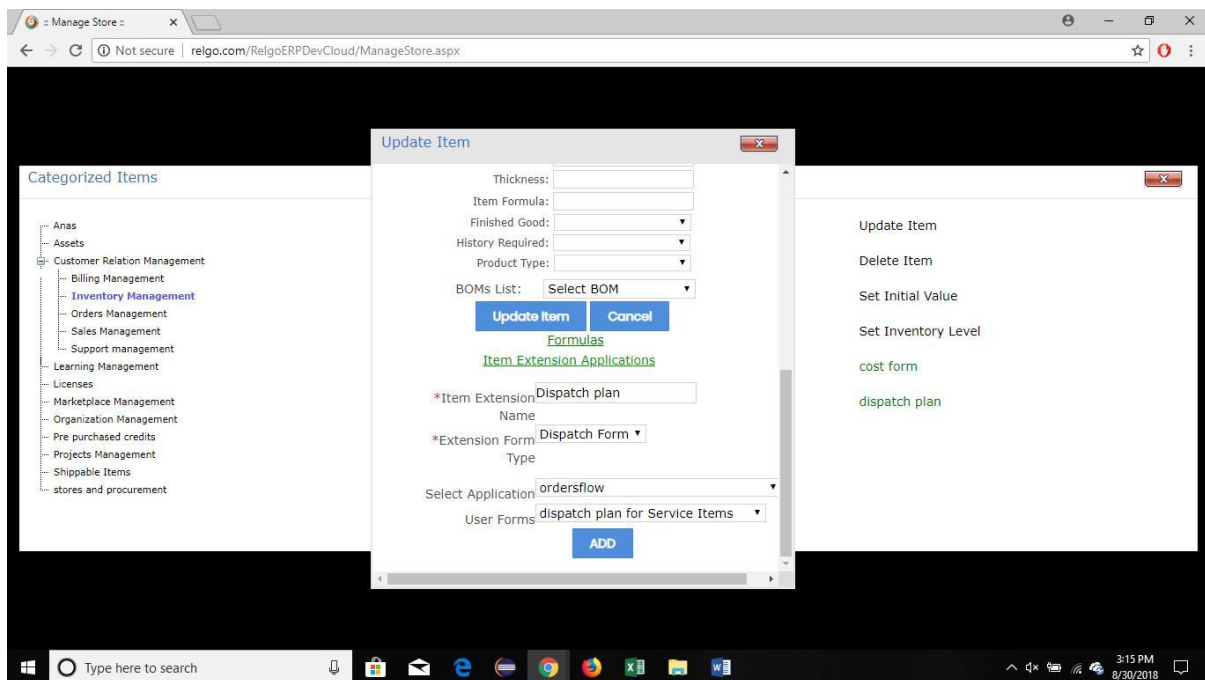
→ Manage Store → Manage Items & Categories

Here in manage items and category for a particular item we can add extension forms





By clicking on Item Extension Applications we can add Extension Form.



Enter Item extension name, select Extension form type, select application and select user forms as above screen.

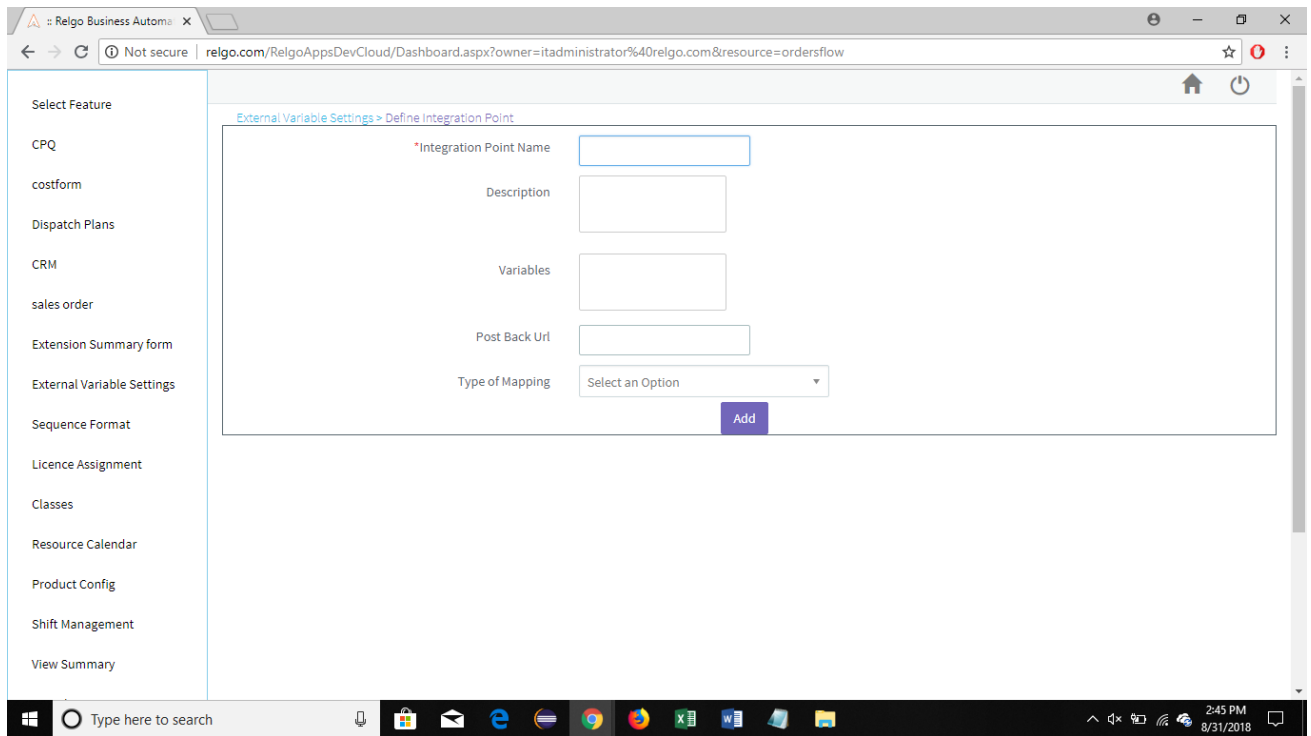
Example:

- Enter item extension name as a Dispatch plan.
- Extension form type as a Dispatch form.
- Select application Order flow.
- Select user forms Dispatch plan for service items.

Create Integration Points for overall orders flow (Dispatch plan, production App)

### **Integration Point**

- Integration is the process of integrating data between two different modules (or) applications.
- When we need to transfer any form data from one application to another application for a functionality purpose, we create an integration point. The source and target address needs to be specified for transferring data



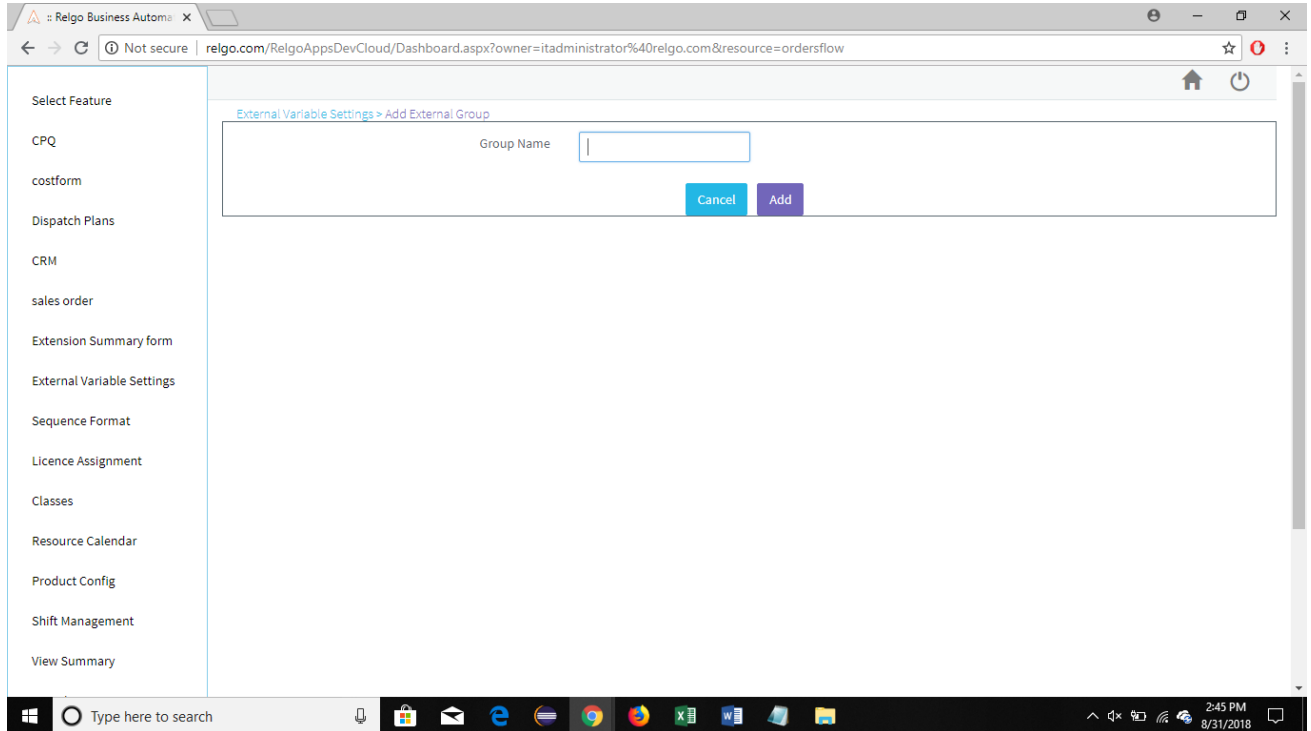
Integration Point Name: dispatch plan (or) production app

Variables: orderid, item, date, quantity/ orderid, item, customer.

Type of Mapping: EVG.

## Add External Group

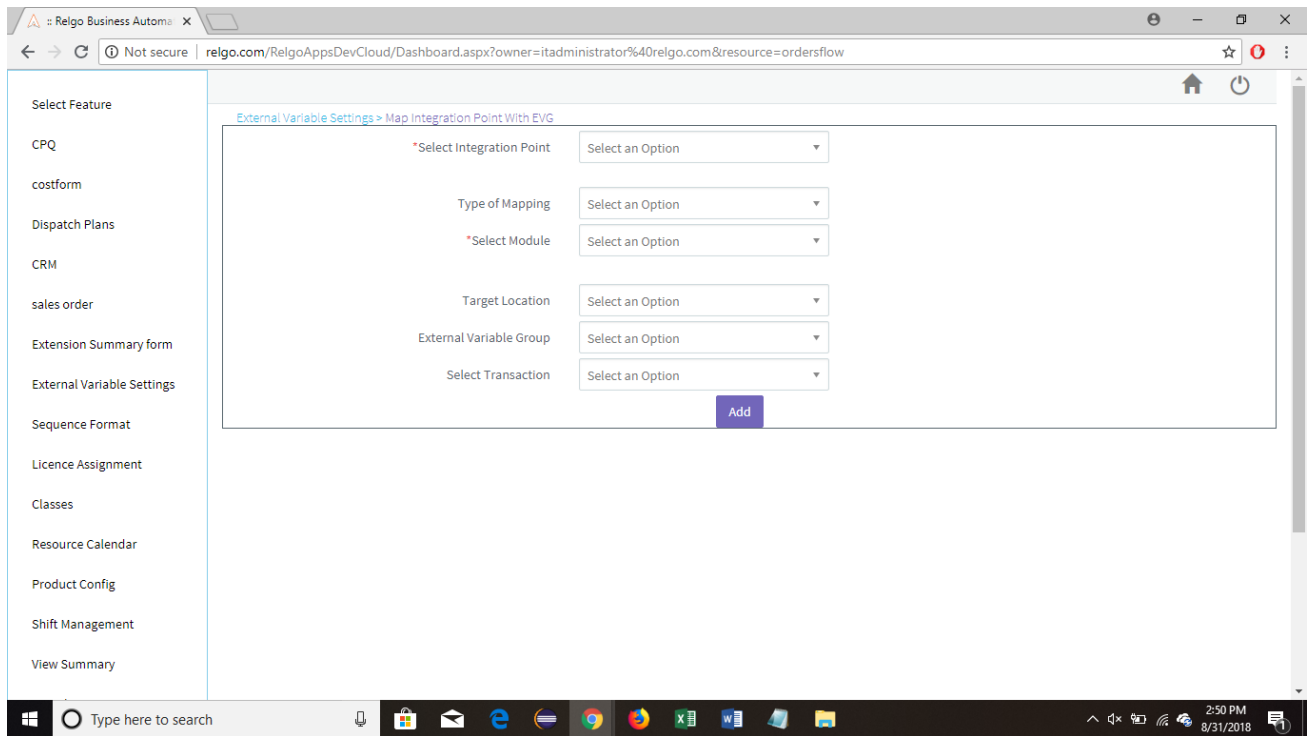
External group used to map variable to variable



Group Name: Dispatch / production.

## Map Integration Point with EVG

It is used to link the specific IP with specific EVG



Select id: dispatch plan / product app

Type of mapping: EVG

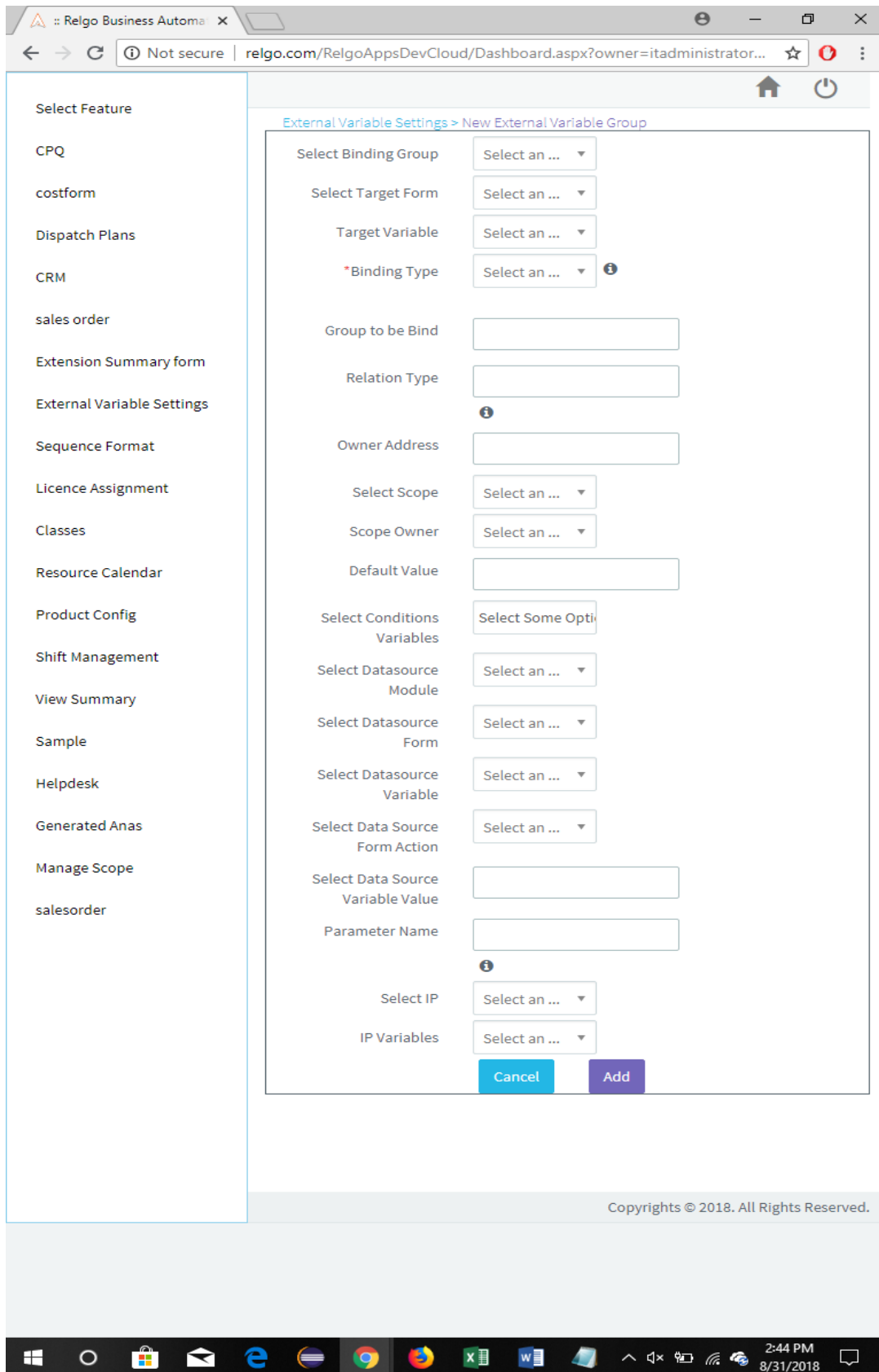
Select module: Orders flow

Target location: license/ dispatch form / production form

External variable group: dispatch/ production

### **New External Variable Group**

- External variable group (EVG) is nothing but a template which consist of target application information (data/url's) which are used in integration process
- It is used to map source form variable to target form variable.



Select Binding Group: Dispatch / production.



Target form: dispatch form / license form / production form.

Target Variable: orderid.

Binding Type: integration point